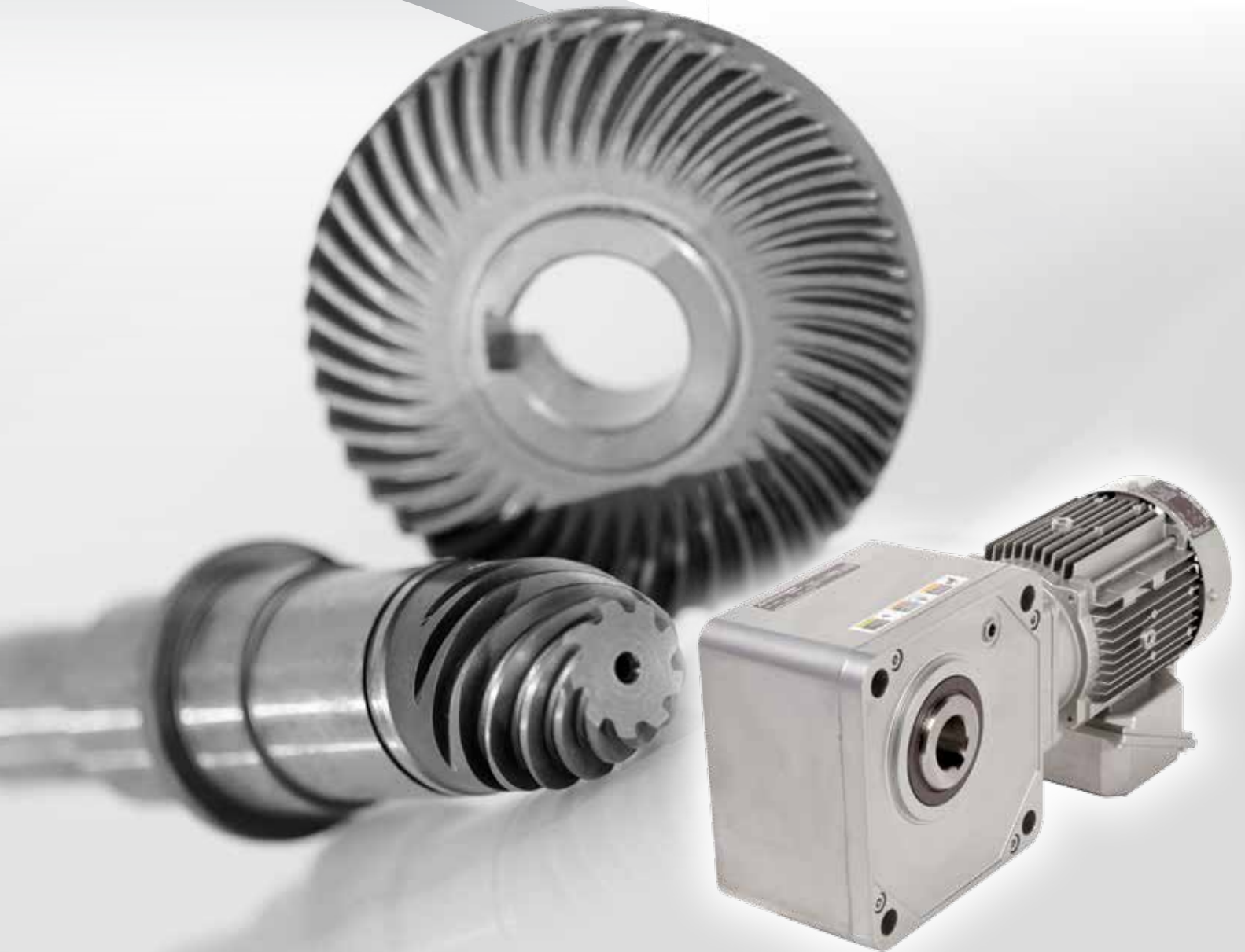


Right Angle Hypoid Gearbox



Hyponic®

Highly Efficient, Grease Lubricated, Compact Design

Grease lubricated design is maintenance-free,
requires **no oil changes**
and is up to 85% efficient across all ratios

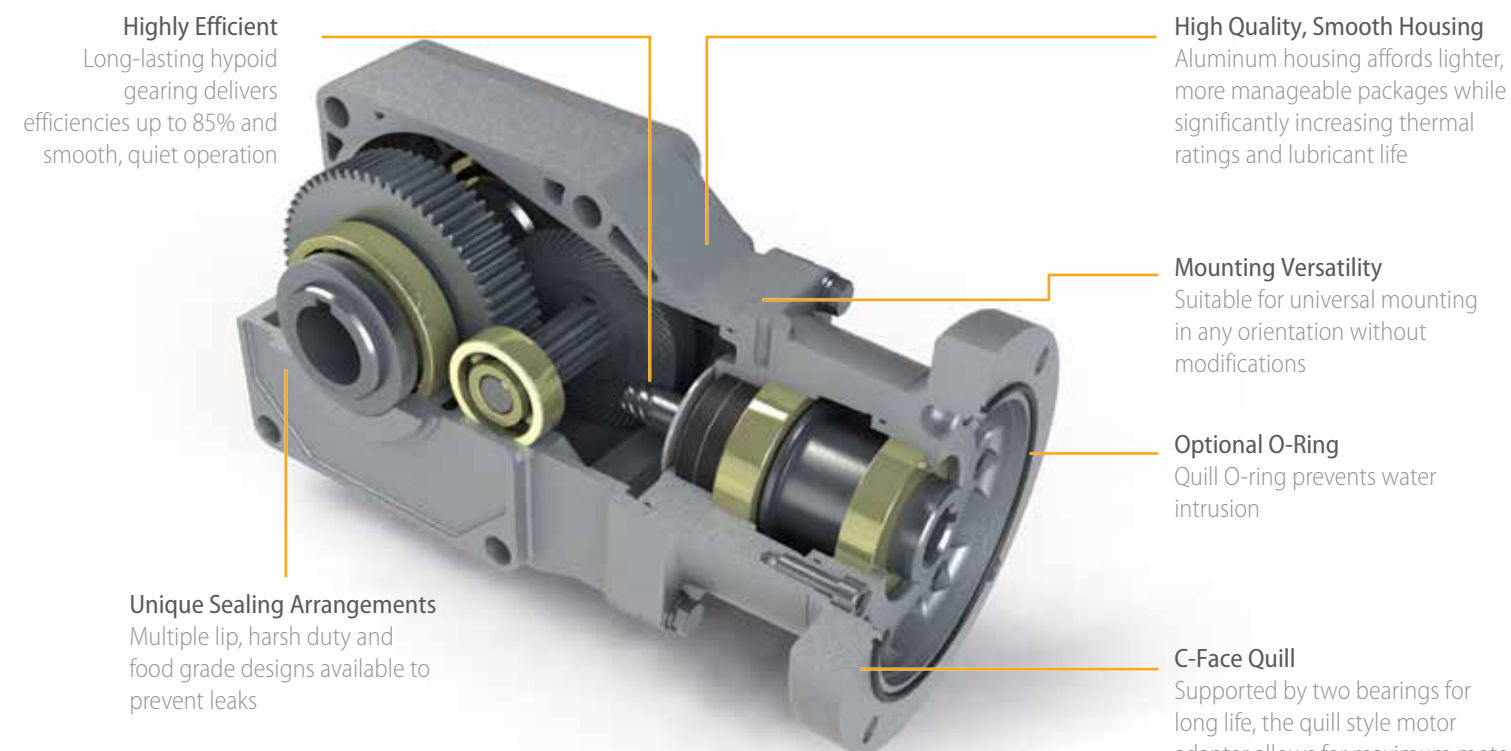
The Sumitomo Hyponic® gearmotor represents 25 years of hypoid gearing excellence. With millions of Hyponics currently in service, the product features a compact, modular housing, maintenance-free grease lubrication and high efficiency operation. Sumitomo's patented, all-steel hypoid gear technology leads the industry in quiet operation and high efficiency.

Features for the Hyponic®

- ▶ **Highly Efficient**
Patented Hyponic® gear technology is up to 85% efficient across all ratios and requires no cooling fan
- ▶ **Durable Hardened All-Steel Hypoid Gears**
All-steel hypoid gearing can last millions of cycles, without measurable wear. Built with a dependable one-piece integral hypoid pinion
- ▶ **Maintenance-Free**
Maintenance-free grease lubrication eliminates routine lubrication inspections
- ▶ **Large Ratio Range**
Ratios from 5:1 to 1440:1 enable desired speeds to be obtained without additional external reduction components

Specifications Summary

Torque Capacity:	13,100 lb-in (1480 N·m)
HP Rating:	1/8 to 15 HP (0.09 to 11.1 kW)
Ratio Range:	5:1 up to 1440:1
Mounting:	Shaft, Flange, Bolt-On Feet
Electrical:	230/460 VAC (Three-Phase)
Housing:	Lightweight, corrosion-resistant aluminum for most sizes
U.S. Patent Numbers:	5,203,231 5,375,479



Additional Features

- ▶ **Hollow Shaft with Shrink Disc**
The optimal solution for long, reliable service in high cycling applications, providing simple installation and removal
- ▶ **Multiple Torque Arm Styles**
We can match the torque arm style to your exact mounting requirements
- ▶ **Face and Flange Mounts**
Space saving designs, featuring ISO standard bolt patterns

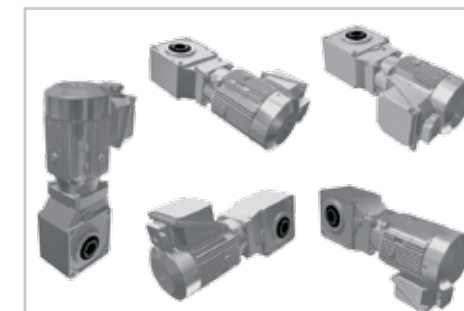


Hollow shaft with shrink disc option yields easy installation and removal for simplified maintenance

Universal Mounting Options

Integral motor and brakemotor options are readily available, reliable and compact, providing energy savings and space savings in any mounting configuration.

In addition, Hyponic®'s maintenance free grease lubrication enables the unit to be mounted in any orientation without any custom modifications.



Hyponic® Frame Size Details

Frame Size	POWER	BORE DIAMETER	
	Output Torque lb-in (N·m)	Keyed Hollow Bore* Inch (mm)	Solid Shaft Inch (mm)
1120	246 (30)	3/4 (20)	3/4 (20)
1220	492 (55)	1 (25)	1 (25)
1230	868 (100)	1 (25)	1 (25)
1320	985 (110)	1-1/4 (30)	1-1/4 (30)
1330	918 (100)	1-1/4 (30)	1-1/4 (30)
1340	1,730 (195)	1-1/4 (30)	1-1/4 (30)
1420	1,970 (220)	1-3/8 (35)	1-3/8 (35)
1430	1,840 (205)	1-3/8 (35)	1-3/8 (35)
1440	3,450 (390)	1-3/8 (35)	1-3/8 (35)
1520	3,790 (430)	1-1/2 (45)	1-3/4 (45)
1530	3,670 (415)	1-1/2 (45)	1-3/4 (45)
1531	5,060 (570)	1-1/2 (45)	1-3/4 (45)
1540	6,480 (730)	1-1/2 (45)	1-3/4 (45)
1630	11,000 (1243)	2 (55)	2 (55)
1631	13,100 (1480)	2 (55)	2 (55)
1632	9,180 (1035)	2 (55)	2 (55)
1640	13,100 (1480)	2 (55)	2 (55)

* Standard hollow bore sizes listed, additional bore sizes available per frame size

Make The Switch

Simplify your gear drive assembly and increase efficiency by switching to Sumitomo's Hyponic®.

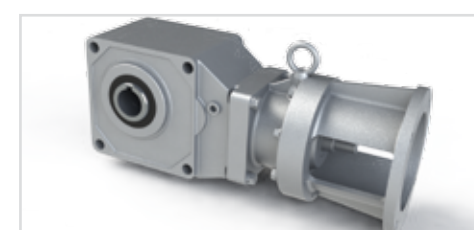


Replacing your inefficient conveyor drive system with Sumitomo's Hyponic® results in:

- ▶ Safe operation; fewer moving parts reduce risk to personnel
- ▶ Simplified, less costly installation
- ▶ Minimal maintenance and parts inventory
- ▶ Eliminate many wear items such as belts, sheaves, etc.



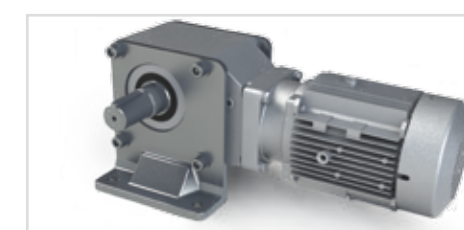
Integral Motor
Options: UL Certified, Class F-Insulation, 1.15 SF



C-Face



Quill Adapter



Plug-In Shaft & Bolt-On Feet



Food Grade

Multiple food grade option packages readily available including:

Antimicrobial Output Seals

Harsh-duty FKM antimicrobial, multi-lipped rotary output seal (pictured to the right)

Food Grade Lubricants

Synthetic, NSF H-1 compliant food grade lubricants readily available

Standard Antimicrobial Coating

NSF 51 approved antimicrobial coating protects against the growth of bacteria, mold, and fungus. Optional food-ready, washdown IP55 duty coating available

Stainless Steel Shaft Options

Corrosion resistant stainless steel keyed hollow bore and hardware available



Hyponic® Applications

Food and Beverage Industry:

- Meat Processing
- Seafood Processing
- Grain
- Beverage
- Baking
- Fruit and Vegetable Processing

Industrial and Commercial Industries:

- Pharmaceutical Machinery
- Packaging
- Automotive Applications
- Material Handling
- Baggage Handling
- Residential Elevators and Lifts



Hyponic®

www.smcylo.com/hyponic



Product Configurator: www.sumitomodrive.com/Configurator

Trying to select a drive? Need more technical specifications? Need pricing?

Sumitomo Drive Technologies' online product Configurator streamlines the selection process, enabling you to build our power transmission products for your specific application.

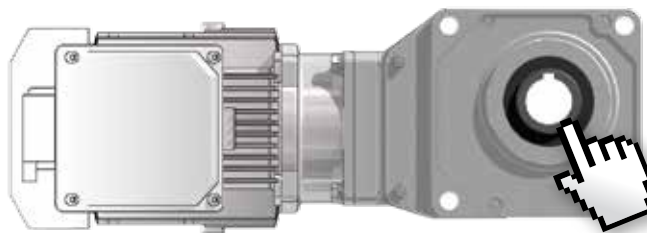


Available 24 hours a day, 7 days a week, registered users quickly receive results that include:

- Downloadable 2D and 3D CAD files
- Product Literature
- Technical Specification Sheet
- Product Ratings
- Request for Quote*
- Quotations*

This unique interactive tool is one more reason Sumitomo Drive Technologies is the world's premier power transmission and control solutions provider.

**Not available for all markets*



Configure your Hyponic® today at
www.sumitomodrive.com/Configurator

Sumitomo Americas

Sumitomo Machinery Corporation of America (SMA) is a subsidiary of Sumitomo Heavy Industries (SHI), the global leader in power transmission knowledge and innovation.

SMA began its operations in 1966 with a work force of ten people and an assembly facility of 5,000 ft² (465 m²). Today, our corporate headquarters in Chesapeake, VA (USA), combined with our strategic satellite locations throughout North, Central and South America occupy more than 500,000 ft² (46,500 m²) of office and manufacturing space. We ship thousands of drive products every month, adding to our North and South American installed base of more than five million units. SMA is committed to providing **Quality at Every Stage.**

USA - Headquarters & Manufacturing

4200 Holland Boulevard
Chesapeake VA 23323
Tel: 757-485-3355

 Sumitomo Machinery Corporation of America
www.sumitomodrive.com

For facilities located in the Americas, please visit www.smcylo.com/locations
For worldwide locations, please visit www.smcylo.com/worldwide
Tel: 1-800-SM-CYCLO